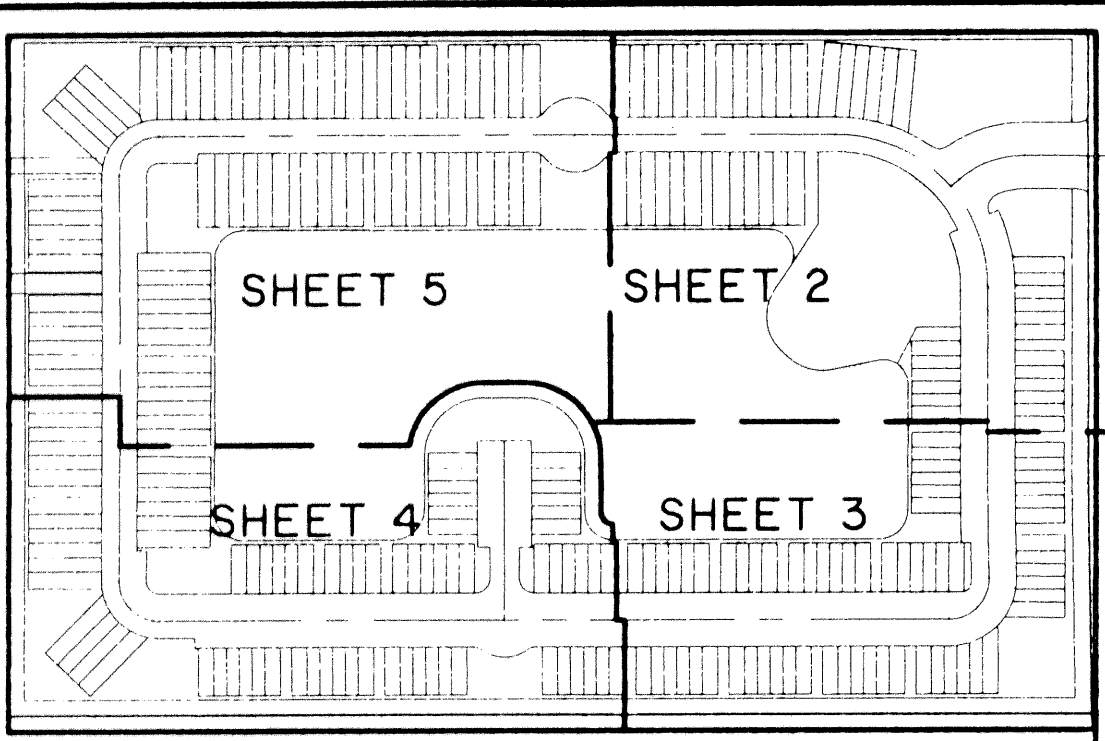


PALMBROOKE TOWNHOMES

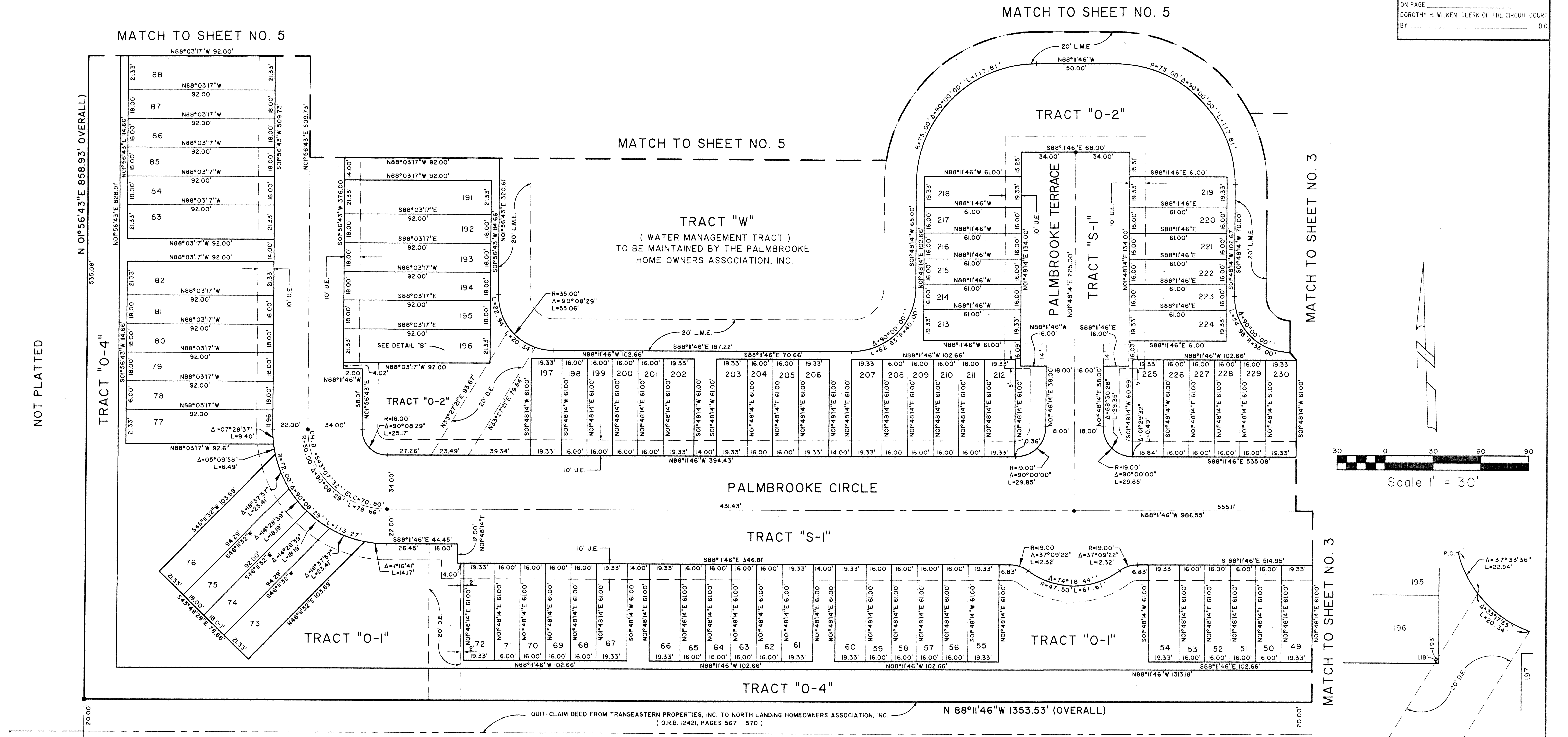
LYING IN SECTION 12, TOWNSHIP 43 SOUTH, RANGE 42 EAST,
CITY OF WEST PALM BEACH, PALM BEACH COUNTY, FLORIDA.
SHEET 4 OF 5

186

STATE OF FLORIDA SS
COUNTY OF PALM BEACH
THIS PLAT WAS FILED FOR RECORD AT _____
M. THIS _____ DAY OF _____ 2001
AND DULY RECORDED IN PLAT BOOK NO. _____
ON PAGE _____
BY DOROTHY H. WILKEN, CLERK OF THE CIRCUIT COURT
D.C.



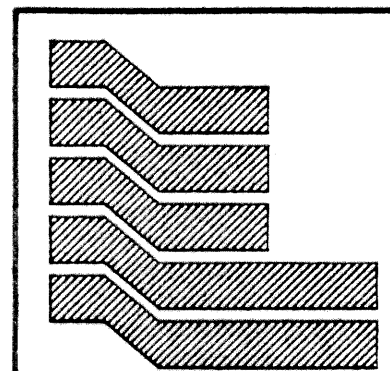
KEY MAP
NOT TO SCALE



DETAIL "B"
NOT TO SCALE

J. MORSE GERIATRIC CENTER
(PLAT BOOK 60, PAGE 51)

NOT PLATTED



Landmark Surveying & Mapping Inc.
1850 Forest Hill Boulevard
Ph. (561) 433-5405 Suite 100 W.P.B. Florida
LB # 4396

PALMBROOKE TOWNHOMES